

RDP – Remote Desktop Protocol.

With Remote Desktop Connection, you can connect to your work PC running Windows from another PC using the Remotes Services Web site.

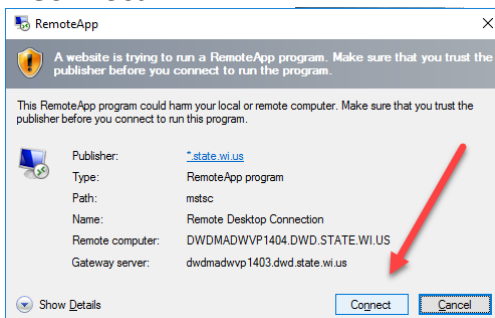
You can use all of your work PC's programs, files, and network resources from your home PC, and it's just like you're sitting in front of your PC at work. (you must know the [name of your computer](#))

To connect to a remote PC, that computer must be turned on, it must have a network connection, if a Notebook it must be past the encryption screen and up to the Windows login. You also need to know the name of the PC you want to connect to.

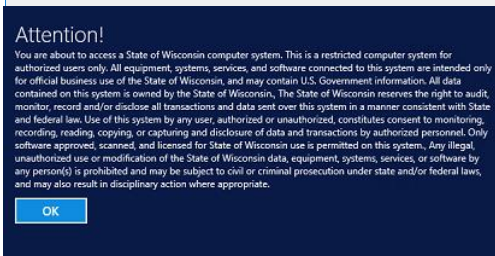
1. Sign into DWD Thin Client System
2. Click on the Remote Desktop Connection



- a.
3. Click on Connect



a.

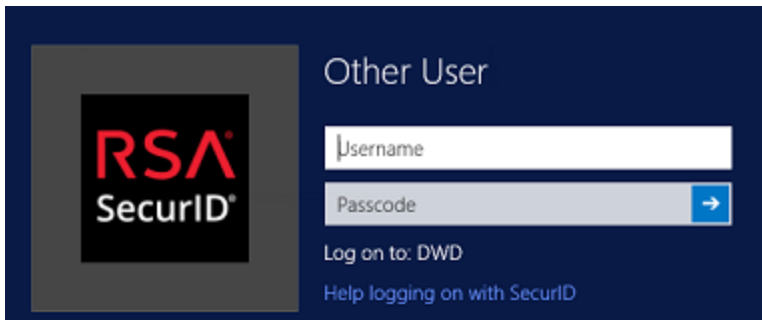


b.

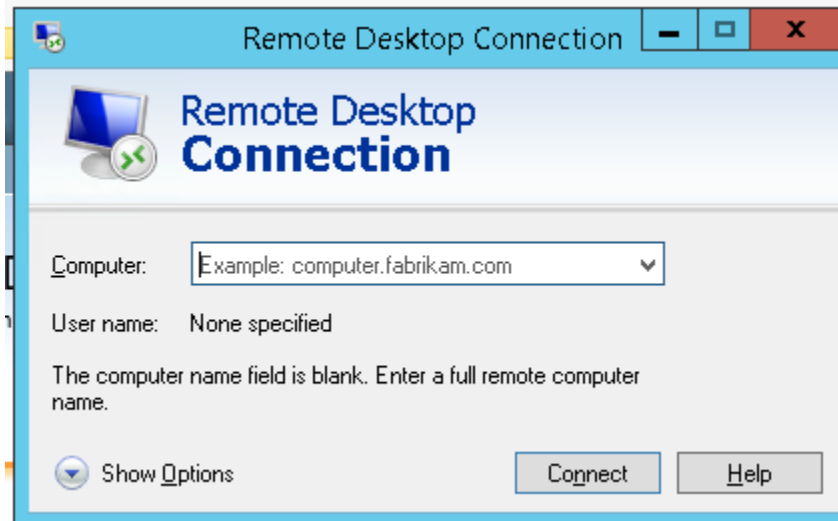


c.

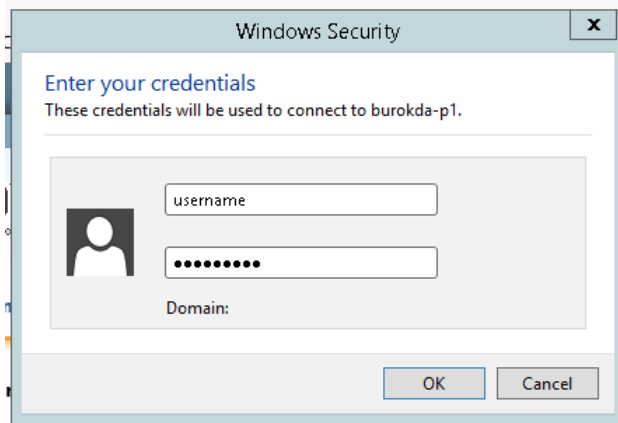
- d. Sign in with DWD userID and pin fob combo



- e.
- f. Make sure you have the name of device you want to connect to.
- g. Enter name of device and connect. ([Finding the Computer name](#))



- h.
- i. Enter DWD userID and password



j.

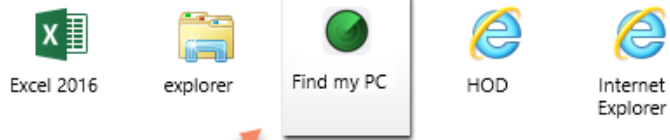
4. Device must be up and on the network.

Finding the Name of your computer.

1. Log into the first Thin Client screen as normal.
2. Click on "Find my PC"

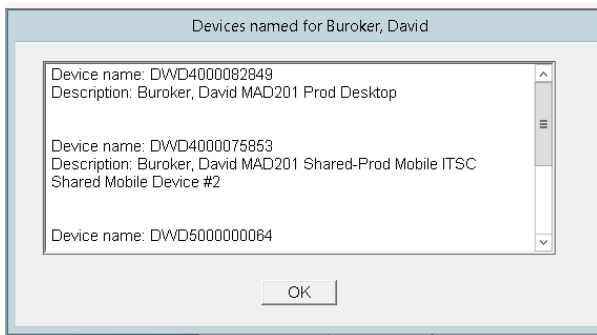
RemoteApp and Desktops

Current folder: /



- a.
- b. Sign into the RSA SecureID

3. Record name of your computer (if you close the window you'll have to log in again)



- a.
- b. Click the "Remote Desktop Connection".